

Helping Make Life Better



2008-2009
ANNUAL REPORT



Canadian Lutheran
World Relief



Our Mission

Inspired by God's love for humanity, CLWR challenges the causes and responds to the consequences of human suffering and poverty.

As a specialized agency of the Lutheran community in Canada, CLWR offers Canadians opportunities to serve the needs of others.

Our Values

Principles of justice—In response to our faith, we as Christians are called to seek justice and show compassion. CLWR responds to people who are suffering due to unjust political, economic and social situations.

Dignity—Created in God's image, human beings are to be valued and treated with respect. CLWR respects the dignity of each person and supports vulnerable communities to strive for justice, human rights and a sustainable future.

Stewardship of resources—All that we have is a gift from God, entrusted to our nurture and care. CLWR strives to

Our Vision

A world where people live in justice, peace and dignity, united in diversity, and empowered to achieve their universal rights to basic needs and quality of life.

responsibly steward those gifts in serving the needs of others.

Partnership—Working in partnership is fundamental and essential to our work. Mutuality, respect and participation characterize CLWR's partnerships with churches, local organizations, funding agencies, international organizations, groups and individuals.

Accountability and transparency—Operating and reporting with integrity promotes understanding and trust. CLWR is committed to being accountable to partners, including donors, by acting in a transparent manner in all endeavours.



Mission, vision and values statements	2
Messages from executive director and president	4
Program reports	
Community development	5
CLWR's global reach	8
Refugee resettlement	10
We Care kits and quilts	11
Emergency relief	12
International volunteer service	12
Four Corners	13
Financial highlights	14
Resource generation	15
Contact information	Back cover

PHOTOS: E. Burgess, J. Drews, D. Harris, L. Kletke, W. Kroeker, J. Niilson, E. Oduro, E. Peters, Reuters Alertnet, B. Rose

From the President



Partnership is one of the fundamental values that guide our work as an agency of the Lutheran churches in Canada. It both motivates and enables the

work which we do.

This partnership begins with God, who desires to bring healing and restoration to this broken world. God calls, inspires and enables us to be partners in this restorative work. But that is just the beginning!

CLWR partners with people like you, who provide generous financial support. We partner with congregations working with refugees, women's groups stitching quilts and assembling baby bundles, Sunday school children packing school kits, and youth assembling We Care bags.

CLWR works with local partners in Peru and Bolivia to support community development projects. We partner with the Lutheran World Federation, supporting country programs in Mozambique, Zambia and India, and special projects in East Jerusalem and Palestine. Through Four Corners, our alternative trade program, we partner with artisans throughout the developing world, supporting their efforts to build better lives for families and communities. With our global ecumenical partners, we work through ACT International (Action by Churches Together) to provide a coordinated response to disaster relief.

In this way, our partnership through CLWR becomes an expression of God's global effort to heal and restore.

We are deeply grateful for your trust and generous partnership. Working together we are changing lives for the better. What a holy partnership we share!

Rev. Dr. Mark Harris
President

From the Executive Director



It is a pleasure to share with you a summary of the life-saving work of CLWR in this annual report.

CLWR is a vital ministry of the overall mission of the Lutheran community in Canada. We act as a primary service vehicle for the international mission of the Evangelical Lutheran Church in Canada (ELCIC) and the Lutheran Church–Canada (LCC), and other Canadians who have entrusted CLWR with their support.

There are literally tens of thousands of Canadian charities engaged in similar and related work abroad and in Canada. CLWR is deserving of your support because we are not just one of many. Our mission statement very deliberately refers to CLWR as an agency of Lutherans in Canada. As you support CLWR, you are serving in the name of Christ, together with thousands of like-minded Lutherans across Canada. We serve jointly, as a community of faith.

Enjoy reading about our successes. Remember that CLWR is your service vehicle which carries out work with respected and valued international partners. You will be hard pressed to find a more effective and cost-efficient organization.

Spread the good news!

Robert Granke
Executive Director



Improved Livelihoods through Community Development

CLWR's long-term development programming continued in five countries—Mozambique and Zambia in Africa, Peru and Bolivia in Latin America and India in Asia. In these countries, CLWR, in partnership with the Canadian International Development Agency (CIDA), supported programs that alleviate poverty and foster the development of just and democratic civil societies. Addressing the issues of environmental conservation and gender equality is also integral to CLWR's programming. In East Jerusalem, CLWR, in partnership with CIDA, supported the redevelopment of a long-term care facility for Palestinians. Food security programs in Ethiopia and

Zambia continue in partnership with the Canadian Foodgrains Bank.

IN MOZAMBIQUE

The social services in CLWR's focus districts were stressed due to flooding (affecting most of the households) and the arrival of migrants fleeing the crisis in Zimbabwe. During the year, CLWR's partner, the Lutheran World Federation, focused on literacy training, especially among women. Awareness training around the issues of advocacy, gender equity, human rights and HIV awareness and prevention proved to be an effective tool. Demonstration plots were developed to educate small-scale farmers on improved agricultural techniques. The impact of the projects was multiplied

as a result of the partnerships developed with other NGOs and local governments.

IN ZAMBIA

The Zambian communities in which CLWR is active continue to face significant challenges, such as food insecurity due to low agricultural production, inadequate health services and a high prevalence of HIV and AIDS. Although illiteracy continues to be an issue in the areas of intervention, the thirst for knowledge remains strong as witnessed by continued demand for formal and non-formal educational opportunities. Compared with program targets, almost 20 percent more children and an incredible 147 percent more adults accessed these opportunities. Improved



literacy spurred success in other areas, such as health, agriculture and environment because those who achieved literacy were more enthusiastic and successful participants. A major success in agriculture has been the adoption of simple technologies like compost beds, green manure and the use of open-pollinated crops.

IN BOLIVIA

The Bolivia program has been challenged by dynamic events in the country and region. A new constitution, recognizing the rights of aboriginal peoples, was adopted in Bolivia this year, creating optimism but with some tensions and anxiety. National organizations have been active in creating opportunities for discussion and interaction in the face of new realities. The CLWR

program has been conducting community training on the themes of governance, citizenship, democratic participation and sustainable development. Radio programs in the native language have been a successful means of education on these topics. Although high rates of inflation and elevated prices on basic staples have created difficulties for marginalized peoples, there is a sense of hope in the country as citizens and the government work towards inclusive processes for implementing change.

IN PERU

Peru is a country rich in resources and yet has many regions with intense poverty. The global economic crisis increased this social inequity and poverty. Mining continues

to play a large role in the economic picture of Peru, and falling mineral prices have had a negative impact on the industry. Between October and December, more than 3,000 miners were laid off in Peru. Many of them live in communities with which CLWR is actively engaged. These communities are learning how to monitor water quality and building on that knowledge to support dialogue with municipal leaders on this and other environmental issues. Round table discussions are bringing together mining companies, the national parks, communities, government officials and NGOs for conversations on themes that impact the region. Despite apparent challenges, there have been significant achievements. Urpichallay has partnered with the National University



of Santiago Antunes Maydo to create a Diploma in Intercultural Education and has formed an alliance with the Huascarán National Park to enable reforestation in several vulnerable areas. Elsewhere, communication with local government has generated so much interest in organic agriculture that a pilot agro-ecological farm has been established.

IN ETHIOPIA

Persistent drought continues to plague much of Ethiopia, including the Regional State of Afar, where CLWR, working through the Canadian Foodgrains Bank (CFGB), is involved in both direct food aid and agricultural assistance. In June, a shipment of Canadian wheat was sent to help some of the 3.4 million people in need of food aid.

CLWR is also supporting the development of

agricultural irrigation systems in a number of communities, allowing them to transition from pastoral animal keeping to the production of food crops. Two communities are examples of CLWR's success. After four years, Aura is able to maintain its irrigation system entirely through funding from farmers. Alelesubula, a similar community, was recently visited by the Canadian Ambassador to Ethiopia, His Excellency Yves Boulanger, who praised it, saying, "This is the first time in my professional career that I have seen... a successful irrigation project with pastoralist people."

IN INDIA

In the course of the year, Lutheran World Service-India (LWSI), CLWR's primary partner, focused on transforming the

organization to a locally governed ecumenical institution. CLWR continued to support the work of LWSI in South 24 Parganas, a district south of Kolkata. The work progressed in the 92 existing communities and expanded to an additional 78. In the new communities, LWSI began building rapport with women. From experience in the existing communities, it has been observed that once the barrier has been broken, women are eager to participate. Motivating and training farmers to use organic methods, particularly for vegetable growing and sustainable food production, has contributed to greater food security in the communities. Awareness raising, using a rights-based collective approach, is encouraging community members to access existing

government programs such as income supplements and old age pension.

IN EAST JERUSALEM

CLWR has been a long-time supporter of Augusta Victoria Hospital in East Jerusalem, which provides the only source of cancer care and dialysis for Palestinians, among other specialized services. This year was spent constructing a 25-bed long-term care facility. The expansion will not only accommodate more patients, but provide quality services for the aged, in particular palliative care, creating a place where physical, spiritual and emotional needs can be met. Family members will now be able to stay with patients receiving palliative care, which has not been previously possible. CLWR secured \$610,000 through CIDA to fund the project.

CLWR'S GLOBAL REACH



COMMUNITY DEVELOPMENT

Bolivia, Peru, Mozambique, Ethiopia, Zambia, India, Israel/Palestine

COMMODITIES SHIPMENTS

Israel/Palestine, Mauritania, Zambia

EMERGENCY RELIEF

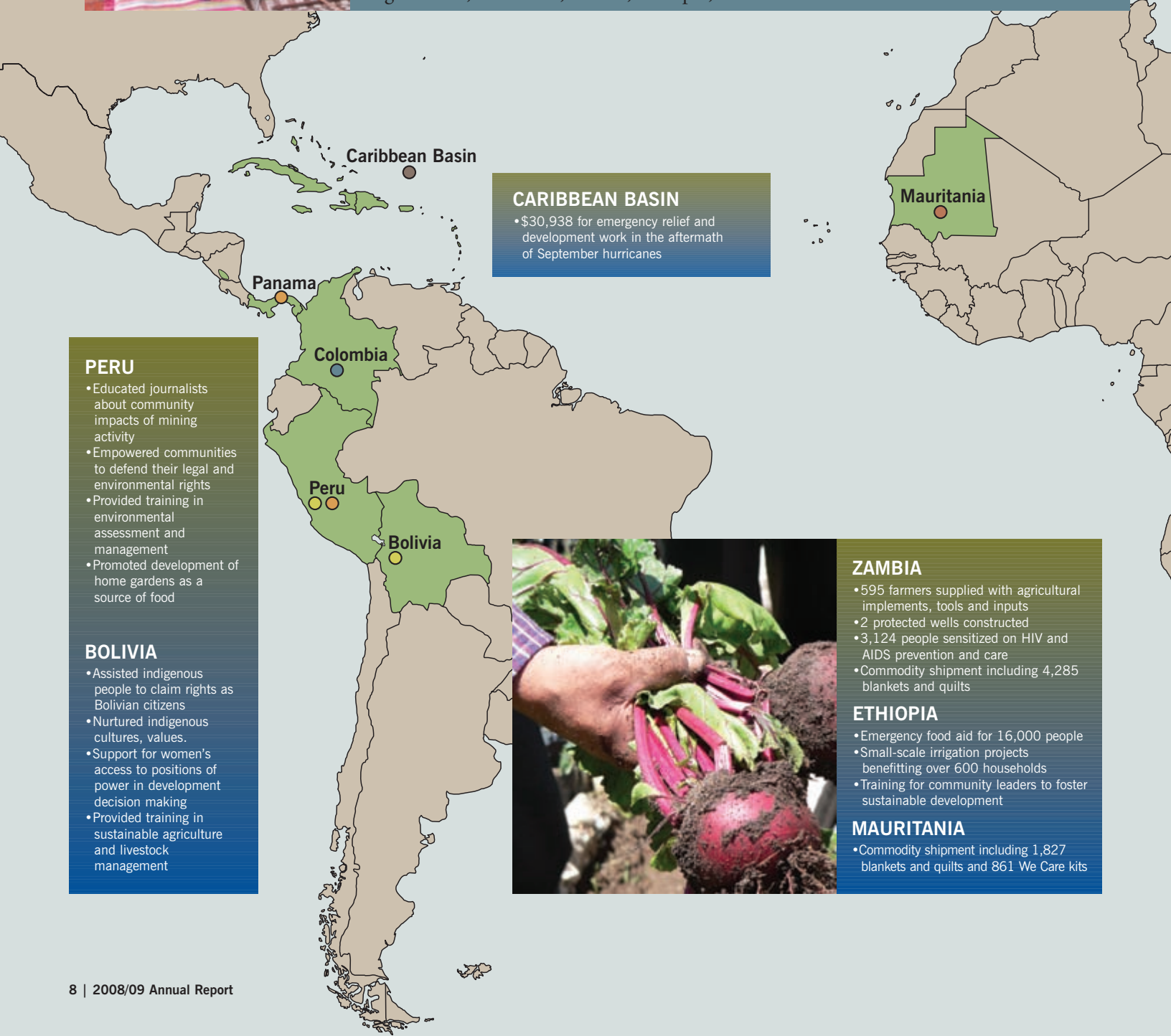
Burma, Caribbean Basin, China, Gaza

FOUR CORNERS PRODUCT SOURCES

Bangladesh, Cambodia, India, Indonesia, Israel, Kenya, Pakistan, Panama, Peru, Thailand

ORIGINS OF REFUGEES TO CANADA

Afghanistan, Colombia, Eritrea, Ethiopia, Sudan



Caribbean Basin

CARIBBEAN BASIN

- \$30,938 for emergency relief and development work in the aftermath of September hurricanes

Mauritania

PERU

- Educated journalists about community impacts of mining activity
- Empowered communities to defend their legal and environmental rights
- Provided training in environmental assessment and management
- Promoted development of home gardens as a source of food

BOLIVIA

- Assisted indigenous people to claim rights as Bolivian citizens
- Nurtured indigenous cultures, values.
- Support for women's access to positions of power in development decision making
- Provided training in sustainable agriculture and livestock management



ZAMBIA

- 595 farmers supplied with agricultural implements, tools and inputs
- 2 protected wells constructed
- 3,124 people sensitized on HIV and AIDS prevention and care
- Commodity shipment including 4,285 blankets and quilts

ETHIOPIA

- Emergency food aid for 16,000 people
- Small-scale irrigation projects benefitting over 600 households
- Training for community leaders to foster sustainable development

MAURITANIA

- Commodity shipment including 1,827 blankets and quilts and 861 We Care kits

STRATEGIC OBJECTIVES IN COMMUNITY DEVELOPMENT:

- Strengthen democracy and local governance
- Implement sustainable development programs and practices
- Enhance gender equity within supported communities



BURMA

- \$108,000 in emergency aid for flood victims

INDIA

- Improved access to water and sanitation for 33 communities
- Entrepreneurial and business training for 66 people
- 6,019 households using new/improved latrines
- 457 awareness sessions on HIV and AIDS

ISRAEL/PALESTINE

- Two commodity shipments including 3,500 We Care kits
- Financial support for Augusta Victoria Hospital
- \$18,164 for emergency relief aid following Gaza conflict

MOZAMBIQUE

- 5,035 people participate in gender equity awareness programs
- 2,523 shade and fruit trees planted
- Improved access to water and sanitation for five communities
- 789 people trained in environmental management and protection

For clarity, this map shows only a partial listing of achievements. CLWR works cooperatively with other organizations on these and other projects.

In 1979, CLWR was one of a few organizations which signed an agreement with the Canadian Government to enable it to sponsor refugees. Over the last three decades, CLWR has sponsored almost 12,000 refugees to come to Canada and rebuild their lives.

During 2008-09, a total of 226 refugees were sponsored. The countries of origin of the refugees are Afghanistan, Burma, Colombia, Congo, Eritrea, Ethiopia, Iran, Iraq, Sierra Leone, Somalia and Sudan. With the exception of Sierra Leone, these countries are still generating refugee flows because of continued widespread violence and massive human rights violations. CLWR welcomed 38 refugees to

Canada, destined to Ottawa, Edmonton, Toronto and Vancouver. The families are pleased to have arrived and are in the process of transition with the help of their sponsor organizations.

Over the course of the year, several regional training conferences on sponsorship were held in Vancouver, Saskatoon and Toronto. These conferences were organized by the Refugee Sponsorship Training Program (RSTP). Participants examined global needs for resettlement, discussed Canada's resettlement priorities and learned about challenges on the ground with regard to refugee screening. CLWR was actively engaged in organizing and participated in all of these training events.

38

Refugees have been resettled in Canada

5

Countries of origin: Afghanistan, Colombia, Eritrea, Ethiopia, Sudan

226

Refugee applications submitted



Fatima Noori and her son Kareem Noori came to Canada in February 2009 from Afghanistan via Pakistan. They are settling in well in their new home in Scarborough, Ontario. Kareem is working full-time at a meat market and attends English language classes in the evenings while his mother takes English classes during the day. Kareem left Afghanistan with his mother when he was very young. Because of safety concerns, he did not attend school and so would like to further his education in Canada. He is a skilled tailor and hopes to find work in that field. (Photo: J. Drews)



3,198
Baby bundles shipped

10,713
Quilts/Blankets shipped

74,056
Total weight shipped
(pounds)

8,132
Kits shipped

Once again, CLWR supporters have filled the sunny yellow We Care bags, and the kits, along with quilts and blankets, have been distributed where they're needed the most. Four shipments were sent out this year. Mauritania and Zambia each received one shipment, where the kits were distributed in refugee camps.

Two more shipments went to East Jerusalem, both containing items for Augusta Victoria Hospital (AVH), including 36 used but serviceable hospital beds donated by a Canadian hospital for the expanded AVH geriatric wing. One shipment also contained items primarily for schoolchildren and orphans. Another brought health kits and blankets for

emergency aid in Gaza following the conflict there in December and January.

An increased number of people have become involved with We Care this year, both as donors and volunteers. The more people CLWR can depend on, the more its partners can depend on CLWR. We've been particularly happy to welcome

additional young people as volunteers, through confirmation classes and school groups.

We are continuing with the Christmas kits begun last year. These provide a small stuffed animal or toy along with basic children's kit items and are sent with shipments throughout the year, wherever there are children to joyfully receive them.



Helping make life better through We Care Kits & Quilts

Helping make life better through Emergency Relief



\$198,479

Contributed by donors toward emergency relief

Natural disasters affect the lives of thousands of people around the globe each year.

CLWR offers its supporters a means of responding to many of these emergencies through its membership in Action by Churches Together (ACT) International.

In 2008-09, CLWR issued

three specific appeals for emergency relief. In May 2008, Cyclone Nargis struck Burma, causing widespread flooding. Later in August and September, tropical storms and hurricanes devastated Haiti and other islands in the Caribbean basin. Then in December 2008 and January 2009, a

humanitarian crisis arose in Gaza in the midst of renewed conflict in that region. Generous donations were also received for victims of an earthquake in China. Overall, emergency relief donations received by CLWR in 2008-09 increased by 170% over the previous year.

Helping make life better through International Volunteer Service

Initiated in 2006, CLWR's International Volunteer program has supported a number of volunteers this past fiscal year. Among them were Adilina Ferreira, who returned home from Angola where she was involved in HIV awareness and prevention.

Rev. Dale and Donna Finch returned from their placement in East Jerusalem where Dale was involved in an administrative work placement with Augusta Victoria Hospital (AVH). Dale helped secure significant funding from the Canadian government for AVH. Donna Finch worked with the Schools and Educational Programs of the Evangelical Lutheran



Church in Jordan and the Holy Land (ELCJHL), assisting with administration, curriculum development and teaching.

CLWR also helped place social work student Ashley MacDonald with NEST, a Winnipeg-based refugee

sponsorship group working in cooperation with CLWR.

We thank these volunteers for the valuable contributions made during their placements and representative support provided on behalf of CLWR to its partners.



Sales of Four Corners' high-quality consumables (coffee, tea and chocolate) and artisan-made consignment items continued to grow this past year. The number of consignment sales held this year was comparable to the previous year but fundraising sales rose by over 12%. Fundraising sales are popular with schools and other youth groups, and give CLWR's alternative trade program exposure to a younger demographic segment.

To illustrate Four Corners' success: in the 2003/04 fiscal year, 54 consignment sales generated \$101,933 in sales. Just five years later, both the number of sales held and

the dollar value of goods sold have tripled.

As always, increased revenue for Four Corners is good news for our artisan communities. As sales increase, greater numbers of artisans can be employed at higher levels of income.

In February 2009, Four Corners launched online

sales, making it possible for communities where consignment sales or retailers are hard to find and individuals who may find it difficult to get out for shopping to support the program. A link to the online store is displayed prominently on CLWR's internet homepage.



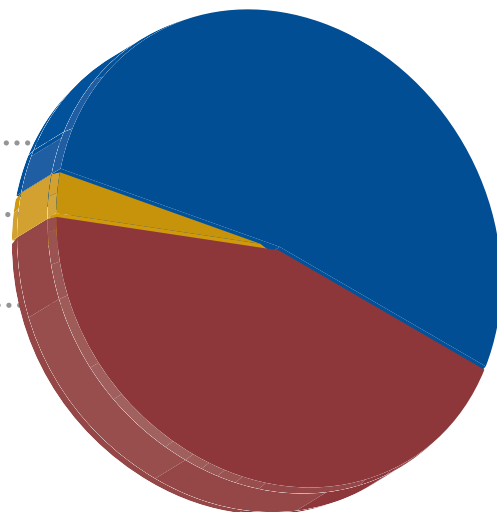
Where our support came from

Total support and revenue: \$6,566,778

Donations from congregations,
individuals and agencies (53%)

Other (3%)

Government and
other grants (44%)

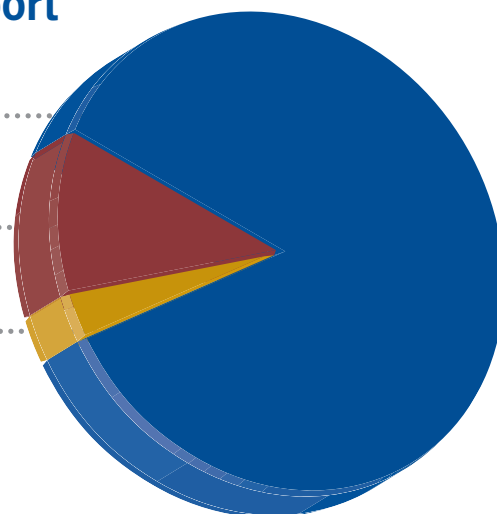


What we did with your support

Global support (86%)

Communications and
resource generation (11%)

General administration (3%)



Detailed, audited statements are available upon request.

Canadian Lutheran World Relief gratefully acknowledges the support of the following organizations:

- The Evangelical Lutheran Church in Canada
- Lutheran Church–Canada
- Canadian International Development Agency
- Manitoba Council for International Cooperation
- Saskatchewan Council for International Cooperation
- The Lutheran World Federation
- Action by Churches Together (ACT) International
- Canadian Foodgrains Bank

Will You Leave A Lasting Legacy?

Does your Last Will and Testament tell a story to others about what has shaped your faith and reveal the values and priorities that have been important in your life?

Choosing to leave a gift from the heart through a will bequest brings meaning, dignity and purpose to a life well lived. Such a gift is your opportunity to participate in the mission and ministry of CLWR long into the future.

CLWR has an international reputation as an organization that makes effective use of donors' dollars and that means your legacy gift will have a real impact on the lives of those who need hope the most.

A gift to CLWR will support long-term development projects. Through these projects people gain the knowledge, skills and tools to build personal capacity and strengthen their communities.

To leave a gift to CLWR in your will, ask your lawyer to include one of the following statements:

"I give, devise and bequeath to Canadian Lutheran World Relief the sum of \$_____, (or) my property known as_____, (or) _____% of the residue of my estate, (or) the residue of my estate, for its sole use and purposes." Should you wish to designate your gift to benefit a specific program or project, then add "It is my preference that this gift be used for _____."

Canadian Lutheran World Relief provides a full range of opportunities for its supporters to make planned gifts. These include:

- Wills/Bequests
- Life Insurance
- Gift Annuities
- Securities
- RRSPs and RRIFs
- Property

For more information and to receive gift planning advice at no charge please call 1.800.661.2597 and ask for the Resource Generation Department.

Your generous heart working through our willing hands will change lives every day.

Be an Awareness Builder

CLWR relates to over 900 Lutheran congregations across Canada. Face-to-face interaction with each of them on a regular basis would be an expensive proposition, directing valuable donor dollars away from aid and development programs. That's where Awareness Builders come in.

Awareness Builders form a national network of volunteers who receive regular news and programming updates from CLWR and then disseminate it to their congregational community. Some serve as ambassadors of CLWR when staff members are not able to respond to requests for

in-person visits to congregations in their neighbourhoods.

CLWR's goal is to have an Awareness Builder in every Lutheran congregation across Canada. To learn more about how you can share your gifts to lift up the work of CLWR, please call 1.800.661.2597 or send an email to clwr@clwr.mb.ca.

International Headquarters

302-393 Portage Avenue
Winnipeg, Manitoba, Canada R3B 3H6
Ph 204.694.5602
Toll-free 1.800.661.2597
Fax 204.694.5460
clwr@clwr.mb.ca
www.clwr.org

Western Regional Office

202-5066 Kingsway Avenue
Burnaby, British Columbia, Canada V5H 2E7
Ph 604.435.9750
Toll-free 1.888.588.6686
Fax 604.435.9923
clwr@clwrbc.ca

Eastern Regional Office

125-1440 Bathurst Street
Toronto, Ontario, Canada M5R 3J3
Ph 416.962.9747
Fax 416.920.0604
clwrto@rogers.com

Bolivia Office

Casilla 2902, Av. Melchor Pinto No. 364
Santa Cruz, Bolivia
Ph/Fax 91.3.333.0453
fgamon@clwr.org.bo

Peru Office

Gral. Pedro Silva Nro. 117
San Antonio, Miraflores
Lima 18, Peru
hmanriqueclwr@lwr.org.pe

Board of Directors 2008–2009

Officers

Rev. Dr. Mark Harris (President)
Deanna Friesen (Vice President)
Bill Risto (Treasurer)
Rev. Dr. Faith E. Rohrbough (Secretary)

Members

Rev. Patricia Cuyatti (Southern Partner)
Rev. Dr. James S. Dimitroff
Joan Meyer
Denis St. Onge
David Schulze
Alice Schuda
Dr. Sasi Prabha Stanley (Southern Partner)
Rev. Gerhard Wilch



**Evangelical Lutheran
Church in Canada**
www.elcic.ca

*In Mission
for Others*



CLWR carries out international development programming, emergency relief and refugee resettlement on behalf of the Evangelical Lutheran Church in Canada and Lutheran Church–Canada.