



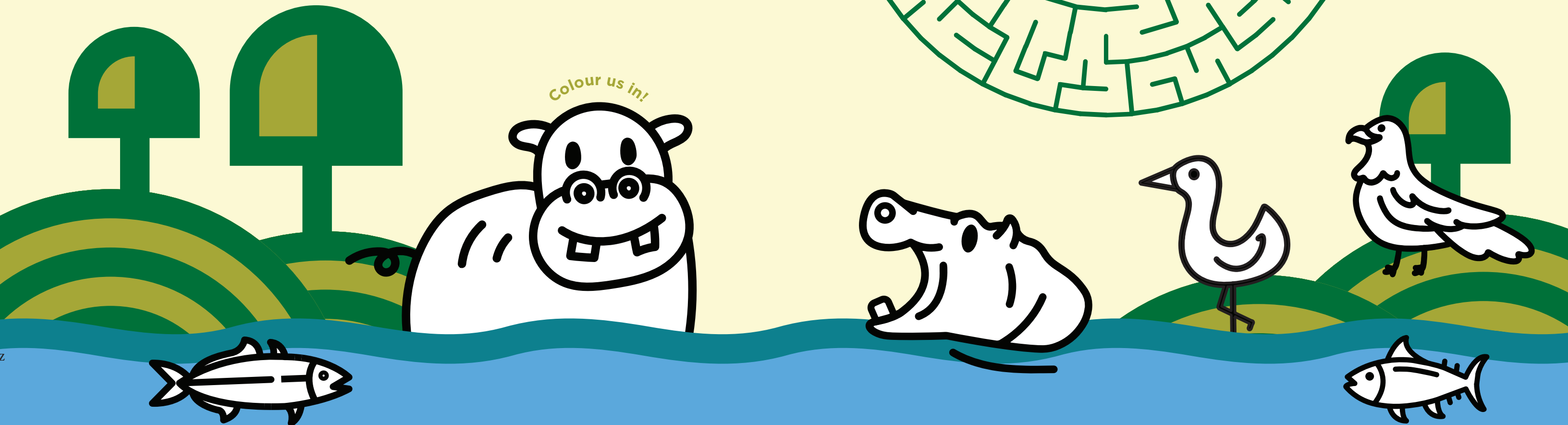
# Friends of Creation

Fill in the blanks!

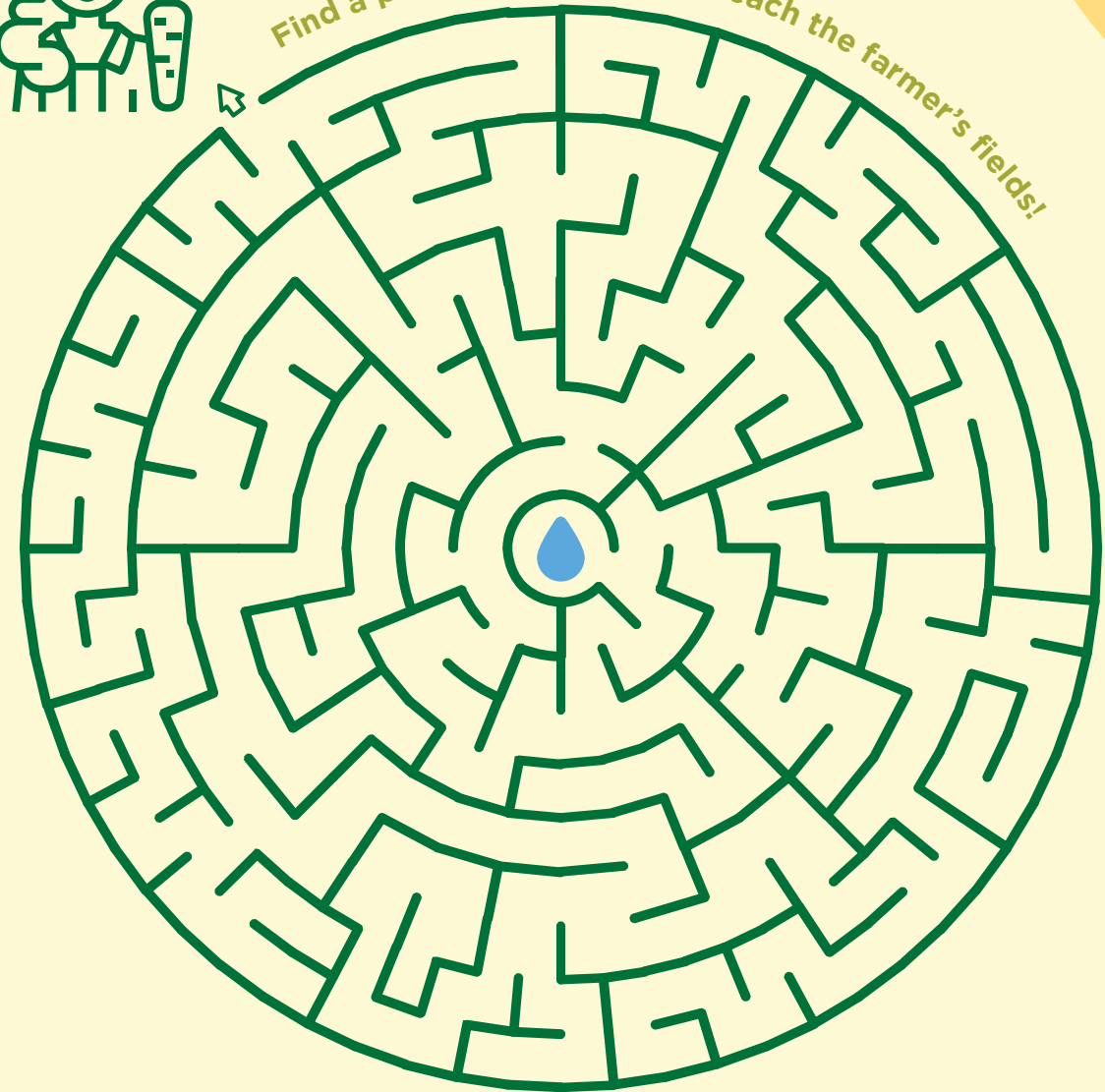
When you send forth your \_\_\_\_\_,  
they are \_\_\_\_\_, and you renew  
the face of the \_\_\_\_\_.

Psalm 104:30

Colour us in!



Find a path for the water to reach the farmer's fields!







# Friends of Creation



Floods and droughts are becoming more common, damaging water systems and making safe water harder to access.

Photo: Quazi Alam/CLWR



As trees disappear and water sources dry up, women and girls must walk farther to collect firewood and water—putting them at risk of violence along the way.

Photo: Marie Renaux/LWF

*A prayer for the communities around Lake Chad:*

God of Abundance,

We lift up farmers whose seasons are shifting and whose soil is tired. Be near to those planting in hope despite failed rains and shrinking harvests. Bless the hands learning to care for the earth— with methods that heal the land, and knowledge sown in the field and shared with the village. May each seed planted in hope bear fruit in justice. Guide us in this challenge, to honour your creation and feed your people.

Amen.

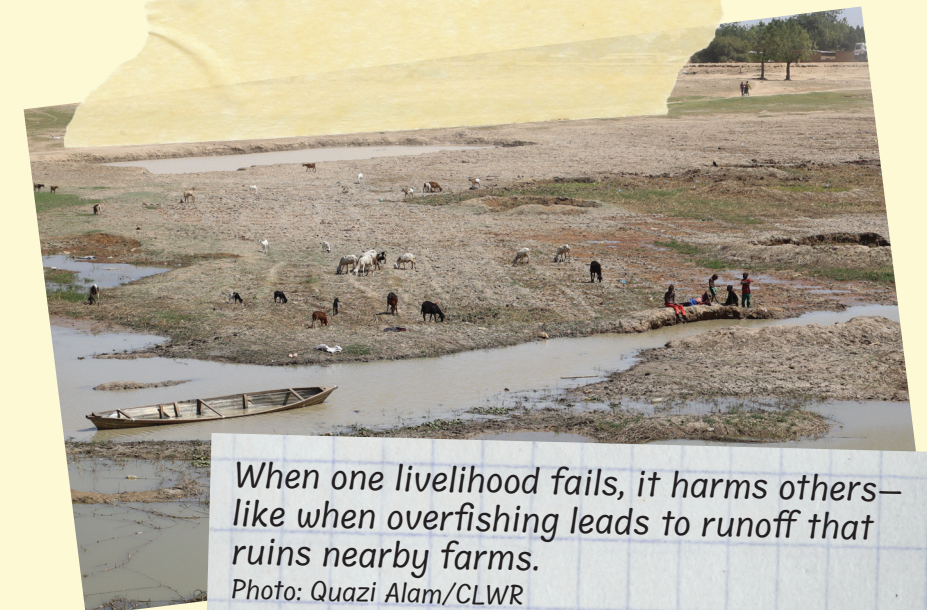
*When you send forth your spirit, they are created, and you renew the face of the ground.*

— Psalm 104:30



Conservation farming and better water management are helping families grow more, even in a changing climate.

Photo: Quazi Alam/CLWR



When one livelihood fails, it harms others—like when overfishing leads to runoff that ruins nearby farms.

Photo: Quazi Alam/CLWR